

The Kibbitzer

Congregation Beth Shalom

706 Bryan Road, Brandon, FL 33511

Phone (813) 681-6547

www.BethShalom-Brandon.org

As of presstime, CBS will be live-streaming most events due to COVID-19. Please check the eblast for the most current information and details.

December 2020
Volume 31, Issue 7

Rabbi

Paul Schreiber

Reb Tuviah 813-681-6547

Cantorial Soloist

Sandy Santucci 813-681-6547

Executive Board:

President

Steve Slavkin 813-323-0541

Past President

Jon Ellis 813-240-4078

1st VP

Gerry Pliner 856-816-2178

2nd VP

Toby Koch 813-654-0877

3rd VP

Sheryl Finke 813-380-3880

Treasurer

Suzie Baylis 808-561-8130

Secretary

Michael Lubin 813-362-1367

Members at Large

Mitch Baylis 808-561-8130

David Friedman 813-417-3088

Lea Garbett 813-672-9383

Gabriel Lifschitz 571-277-1416

Caren Magdovitz 813-389-9613

Murray Dimant 774-526-2008

FROM THE RABBI - *Rabbi Paul Schreiber, Reb Tuviah*

The Awesome Dual Message of Chanukah!

Chanukah is a complex holiday. At the heart of all the themes, however, is the actual name of the holiday, Chanukah. The word comes from the Hebrew word "dedication" or "rededication," as in chanukat hamikdash, the "Rededication of the Temple" which the Maccabees undertook after their victory over the Syrian-Greeks. This 'rededication' was both a physical one and a spiritual one. Throughout the years of the Syrian-Greeks' occupation of Judea, the Temple stood at the forefront of their struggle. It symbolized the heart of what they were fighting for: the right to serve G-d according to their own laws and traditions. Theirs was a struggle over the purity of the Temple service which represented the purity and integrity of Jewish life. In fact, the Rambam begins his description of the events of Chanukah by describing the efforts to claim religious independence from foreign influence as the primary message of Chanukah. This brings us to the second definition of "Chanukah" – "chinuch", the term used for Jewish education. The process of Torah education - for both children and adults - is a constant 'rededication' of our souls, chanukat haneshama, through the light of Torah study.



Chanukah, therefore, presents us with a double message: Chanukat Habayit & Chanukat Hanesama. It reminds us the synagogue/sanctuary is more than just a place of prayer. It is the spiritual center of our community. Our efforts to 'rededicate' ourselves to Jewish life must reconnect us with our synagogue, both physically and spiritually. Chanukah reminds us the most substantial and important way to achieve this rededication is through the light of Torah learning, chinuch, on all levels – children and adults alike.

This is Congregation Beth Shalom, this is our temple. If we want to make sure it is vibrant, we also need to make sure that its needs are maintained. Who better than the Maccabees understood that for the Temple to function it must be rededicated, cleaned, and beautified, so that the people could embrace Jewish life with pride? The second focus is a review of the many chinuch opportunities available to us as a community. We know of the tremendous efforts under way to revitalize our various committees as well as our religious school, but we must also lead by example, and dedicate ourselves to the mitzvah of personal commitment to Torah learning. To that effort we would do well to devote a good portion of our time reexamining the inner workings of our various committees in order to more effectively address the many needs of our temple, all from a Torah perspective.

At this time of "Chanukah" – renewal and rededication, I would like to challenge all of us to seize this opportunity – to 'renew' our temple and to 'renew' our spirit by actively engaging in CBS, monetarily supporting our temple, focusing on joining a committee, telling others about our incredible family and inviting them to a service, albeit mostly virtual, and by taking advantage of the varied learning opportunities that are free to CBS members.

This is the 'dual' message of Chanukah – "Chanukat Habayit" and "Chanukat Hanesama", rededication of our Sanctuary, and of our souls. May this be the year of Chanukah - "Chanukat Habayit" and "Chanukat Hanesama" for all!

L'Shalom, Reb Tuviah

FROM THE PRESIDENT - Steve Slavkin

I am borrowing an idea that Dave Friedman expressed four years ago. It expresses my thoughts currently.

The great political divide that embraced this country has affected all of us who are politically engaged. Those of us at Congregation Beth Shalom are not immune. Regardless of which presidential candidate you have supported, one thing is certain. Life will go on. We will continue to live our lives. We will continue to care for our families. We will continue to rejoice in life's events. We will continue to come together, pray together, and celebrate together.

As written in our mission statement, let's continue to be a caring community. Perhaps we should add, "Regardless of political affiliation!"

Thank you, Dave, for expressing it so well.

We are truly a lucky congregation. We have a lot of amazing volunteers. I have counted those who volunteer in some way – from working on committees, to reading Torah, to cleaning up our sanctuary after our new roof was installed, to helping set up for outdoor services. The percentage of the congregation who contributes in some way – as a volunteer or a financial supporter – is remarkable. And it is really important because we operate with an exceedingly small staff.

Jenny Allen, our administrative director, has been crucial in keeping our congregation running smoothly. Jenny has decided to cut back to part time and will soon be leaving the position of administrative director. We are happy for the opportunities this provides for her and her family and wish her only the best. At the same time, we acknowledge she will

be deeply missed – her warmth and creativity, her hard work and dedication to the temple way above and beyond what her formal job requires, have made a true difference to us all. She has been a remarkable help to me, and to Congregation Beth Shalom. We have been fortunate to have her as part of our community for so many years.



Toby Koch is leading a group of our wonderful volunteers who will be stepping in to help keep our office running. We know you will be understanding and patient during this time of transition.

"We do things better when we do them together."



UNION FOR **MEMBER**
REFORM JUDAISM

האיחוד ליהדות רפורמית

SERVING REFORM CONGREGATIONS IN NORTH AMERICA

Congregation Beth Shalom provides a meaningful spiritual home for people of all ages and levels of knowledge, a place to learn and to question, a place to worship and to celebrate, and a place to find a community that cares.

We offer:

- ☆ Friday worship services at 7:30 p.m.
- ☆ Religious school pre-k through 10th grade
- ☆ Complete B'nai Mitzvah preparation
- ☆ Youth group programming
- ☆ Adult Education classes
- ☆ Community-wide events, including Mitzvah Day



The ritual committee meets the last Wednesday every month at 6:30 p.m. Please contact Michael Lubin at mike.8.11.2007@gmail.com for a link or more information.



ILENE R. SCHWARTZ
Realtor®
(813) 625-2942

ileneRschwartz@gmail.com
Fax: (813) 655-1057
www.realtorilene.com
316 E Bloomingdale Ave, Brandon, FL 33511

HomeXpress
Realty, Inc.



Upcoming Dates To Remember

- **Wednesday, Dec. 2:** Men's Club.
- **Wednesday, Dec. 2, at 6:30 p.m.:** Holocaust survivor program hosted by The Florida Holocaust Museum and The Hillsborough County Public Library Cooperative. This event will be followed by a discussion and virtual **Dinner With The Tribe**. More details on page 4.
- **Sunday, Dec. 6, 10 a.m.:** Chanukah/holiday vendor bazaar. Please see page 5 for more information.
- **Tuesday, Dec. 8, 6:30 p.m.** Ladies Night In. More information on page 10.



- **Friday, Dec. 11, 7:30 p.m.:** Shabbat and Chanukah on the back lawn. Please bring your menorah and three candles. Details on page 9.

- **Sunday, Dec. 13, 10 a.m.:** Religious school Chanukah celebration for students.

- **Monday, Jan. 18, 7 p.m.:** Page Turners. Details on page 8.

*Religious Education Calendar, page 7;
Full calendar, page 15*

Due to COVID-19, please check the eblast for the most current information and details on all our events.



BEN FERNANDES & KEITH BALOT
OWNERS

phone: 813.657.6200
fax: 813.413.2045
Keith@krkvalrico.com.

4321 Lynx Paw Trail
Valrico, FL 33596
Ben@krkvalrico.com

www.krkvalrico.com

December Oneg Schedule

There can be no joy without food and drink. — Talmud, Mo'ed Katan

We hope you and your family are doing well.

The Oneg Committee has not scheduled oneg hosts for the month of December.

Since the temple has been closed for more than three months, we are waiting for our executive board to notify us as soon as they are able to determine at which time they feel it is safe to re-open the synagogue.

We are considering a plan to have "virtual oneg hosts." Please let us know if you are interested in this opportunity to honor a special person or date in your life.

If you have any questions or are interested in hosting an oneg, please contact us (Judith 856-816-2174, and Anna 707-628-5399).

Anna Feldman & Judith Pliner

The Kibbitzer

Volume 31, Issue 7
Published Monthly by
Congregation Beth Shalom
706 Bryan Road
Brandon, FL 33511
Phone 813-681-6547
Email: cbs-admin@hotmail.com

Email and articles for publication:
TheKibbitzer@hotmail.com
For current news and events
see the congregation's website:
<http://www.bethshalom-brandon.org>

Congregation Contacts

813-681-6547 • cbs-admin@hotmail.com

Office hours:

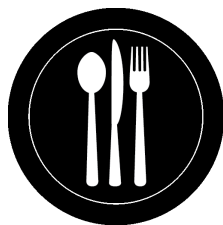
subject to change without notice, please refer to eBlast
Tues., Wed., and Friday: 9:30 a.m.—2:30 p.m.
Voicemails and emails will be monitored daily.
Office is closed on holidays

Weekly Email Blast submissions

bethshalominfo@gmail.com

eBlast deadline is Wednesday at 4 p.m.

DINNER WITH THE TRIBE — Anita Clifford



Wednesday, Dec. 2, 6:30 p.m.

I thought we might try something different this time. A Holocaust survivor is having a virtual talk. It's sponsored by Florida Holocaust Museum and the Hillsborough County Public Library Cooperative. Let's listen to this story and we can talk about it afterward while having a bite or a drink.

Don't forget to register for the program! Details and information is below.

After the talk we'll chat too, and I'll send the link later.

Anita Clifford
niewdnarb@yahoo.com

Meet Marie—Holocaust Survivor

Wednesday, Dec. 2, at 6:30 p.m., The Florida Holocaust Museum and the Hillsborough County Public Library Cooperative will host a virtual program with Holocaust survivor Marie Silverman. Marie will tell her story, which includes her life in hiding, internment, escape, and emigration. The talk will be followed by audience Q&A.



Marie Silverman (née Berkovic): Marie was born in 1931 and lived with her sister Jeannette and their parents in Antwerp, Belgium when World War II began. After Germany invaded Belgium, the family escaped to France. For a while, non-Jews hid them on a farm, but when the roundups began, the family was captured and separated: the sisters with their mother were placed in an internment camp at Rivesaltes, France, while their father was sent to a different camp. After nine months, Marie's and Jeannette's mother managed to

smuggle her daughters out of Rivesaltes. They were hiding with other refugees in Vence, France. They were then briefly reunited with the parents who managed to escape, but the father soon died as a result of the mistreatment he had endured in the camp. Two partisan couriers took the sisters across the Pyrénées Mountains on foot from Vence to Barcelona, Spain. Marie and Jeannette lived with their aunt and uncle and then came to the United States. Once here, they were placed in an orphanage and with foster families until their mother was able to reunite with them in 1949.

For more information and to register for this special event, please visit <https://www.flholocaustmuseum.org/event/meet-marie-holocaust-survivor-virtual-program/> or <https://register.gotowebinar.com/register/3571453870295536397>.

Committees/Chairpersons

Building/Capital Fund

Peter Jacobson

Caring

Christine Stockelman, Anna Feldman

Finance*

Gerald Pliner

Fundraising*

Mitch & Suzie Baylis

Life Long Learning*

Janice Perelman

Strategic Planning*

Steve Feldman

Membership*

Sandee Pelk, Lea Garbett

Retention

Judith Pliner

Oneg

Anna Feldman, Judith Pliner, and Sue Reckner

Publicity

Toby Koch

Ritual*

Michael Lubin

Facility and Safety

Marvin Shienbaum, Gabe Lifschitz

Social Action*

Judith Pliner

Religious School*

Reb Tuviah

BESTY—Youth Group*

Advisor — Mags Oldman

** Ex-officio voting board member
 (each committee only gets one vote)*

Other Programs

CBS Singles Over 50

Anita Clifford

Chavurah

Anita Clifford

Dinner With the Tribe

Anita Clifford

Interfaith/Outreach

Sheila Slavkin

Kibbitzer Editor

Lea Garbett

Kolot Shalom — Choir

open

Library

Sandy Saviet

Men's Club

Seth Dugan

Page Turners

Anita Clifford

Web Administrator

Jenny Allen

Kudos & Mazels

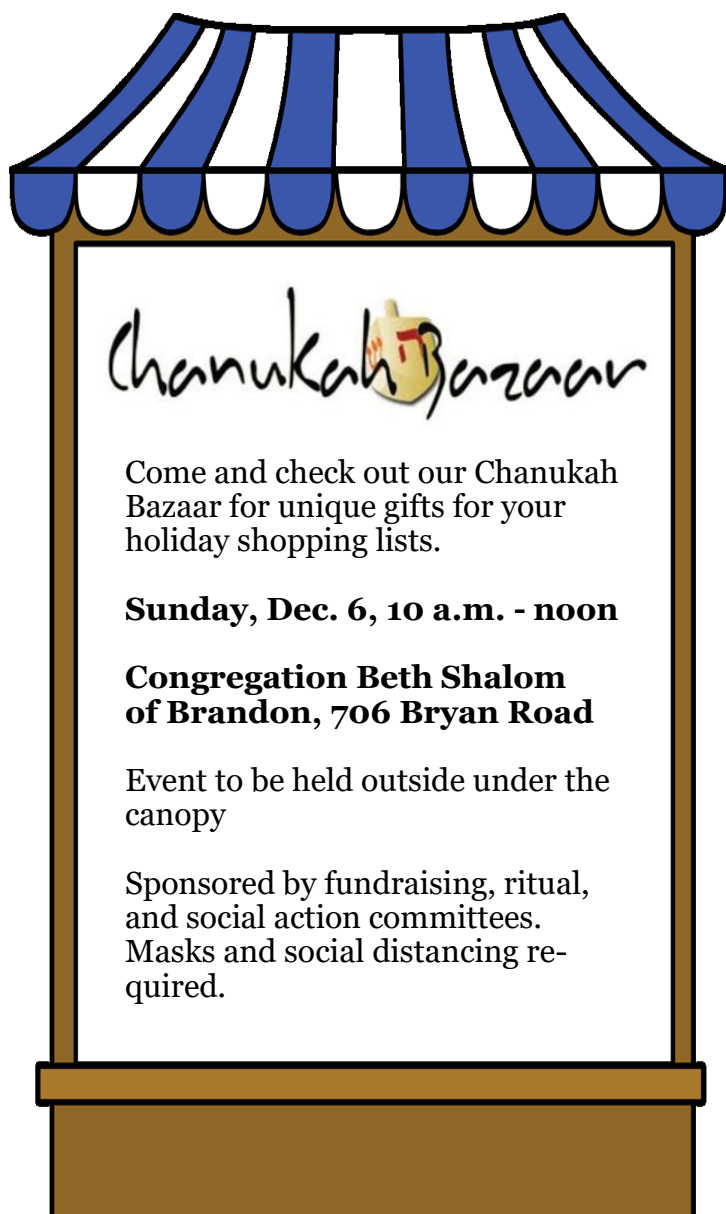
Join with CBS in offering congratulations and recognition to the following members on their accomplishments:

KUDOS

- Kudos to **all those who are attending Reb Tuviah's Adult Ed classes** on Tuesday night. We are really being challenged but we're hanging in there and learning so much about our ancient writings. Torah learning is truly good for the soul!
- Kudos to **all our students** for finishing the first quarter of school in this challenging time.
- Kudos to **Jacob Garbett** for advancing to the high school regional swim meet in 2 relays and 1 individual race.
- Kudos to **Reb Tuviah, Mark Finke, and Michael Lubin** who planned our Veteran's Day service.



*Do you know a CBS member who should be congratulated for a special accomplishment?
If so, email the name and accomplishment to cbs-admin@hotmail.com.*



MEMBERSHIP

The Congregation Beth Shalom membership committee is delighted to announce our new families.



The **Katz-Newport family** with **Anthony, April, and children Ireland, Connor, and Jamie**.

The **Rachel Jo and Jimmy Duncan**, both retired.

Welcome back returning member **Debora Rachel Miranda**.

– Sandee Pelk & Lea Garbett

Help Wanted

You can receive a \$400 credit on your annual dues.

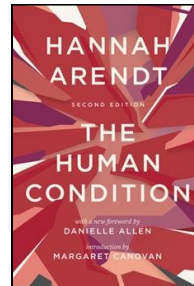
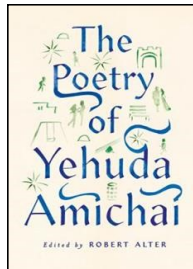
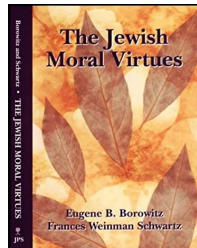
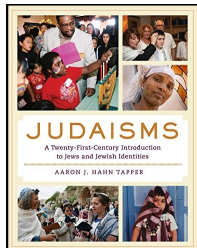
The Congregation Beth Shalom board of directors is offering up to two members each a \$400 credit off their annual dues in exchange for volunteer work.

We are currently looking for one or two volunteers to come into the temple twice a month to do general cleaning in the interior of the building. This will help keep the congregation clean and ready as services begin opening up.

This program is being developed to encourage volunteerism and looking to be implemented soon. Anyone interested in this opportunity or would like more details, please contact our treasurer, Suzie Baylis at all4suzie@gmail.com.

THE LIBRARY CORNER — Sandy Saviet

This month I am continuing my list of recommended books taken from *Moment Magazine* and its “Must Read Books to be an Educated Jew.” This month's selections are:



Two books recommended by Michael Twitty, who is an African-American Jewish writer, culinary historian and educator. They are “Judaisms: A Twenty-First-Century Introduction to Jews and Jewish Identities” written by Aaron J. Hahn Tapper, and “The Jewish Moral Virtues” written by Eugene Borowitz and Frances Schwartz.

“The Poetry of Yehuda Amichai” by Robert Alter is recommended by Edward Hirsch and Evgeny Kissin.

“The Human Condition” by Hannah Arendt is recommended by Judith Shulevitz.

And the last selection this month is: “Pioneers and Homemakers-Jewish Women in Pre-State Israel” which is edited by Deborah S. Bernstein. It was recommended by Shulamit Reinharz, who was a sociology professor at Brandeis, and founding director of the Hadassah-Brandeis Institute.

I wish all of our readers a Happy Chanukah and a safe New Year's Eve.

- Sandy

Congregation Beth Shalom - Donation Form

At times of sorrow & memory, as well as at times of joy, tradition teaches us that we honor others by giving of tzedakah. Please return your completed donation form to the temple office.

In Memory of _____

In Honor of _____

Donor's Name: _____

Address: _____

\$18 _____ \$36 _____ \$54 _____ \$180 _____ Other _____

Designated Fund:

- | | |
|---|--|
| <input type="checkbox"/> General Fund | <input type="checkbox"/> Youth Group Fund |
| <input type="checkbox"/> Endowment Fund | <input type="checkbox"/> Rabbi's Discretionary Fund |
| <input type="checkbox"/> Building Fund | <input type="checkbox"/> Religious School Scholarship Fund |

- | |
|--|
| <input type="checkbox"/> My check is enclosed
<input type="checkbox"/> Please bill me |
|--|

“Tzedakah weighs as much as all the other commandments combined” - Talmud
 Congregation Beth Shalom 706 Bryan Rd. Brandon, FL 33511 813-681-6547

HIGH HOLIDAYS

High Holiday Appeal Drive Ongoing Thru January

Our annual High Holiday pledge drive is ongoing.

Our annual High Holiday appeal is a vital component in supporting Congregation Beth Shalom and its mission to provide a historic center of Jewish Life serving Eastern Hillsborough County.

This past year we have been financially challenged by the cost of our new roof and COVID-19, and we need your help.

A few anonymous donors have already stepped up. They have agreed to match dollar for dollar every amount pledged in this year's Kol Nidre Appeal up to \$15,000. If you have not made a meaningful pledge, please consider making one, and if you have already made your pledge

We are still also accepting donations for our congregation food bank. Please bring your non-perishable items or pet food to Simchat Torah or Sukkot, or call the temple office to arrange a time to drop off your items.

please give some thought to increasing it.

Every dollar pledged will raise two dollars toward our \$30,000 goal. You can click here to donate <https://secure.acceptiva.com/?cst=4w4Z6D>.

Thank you for your support.

COLLEGE CONNECTION

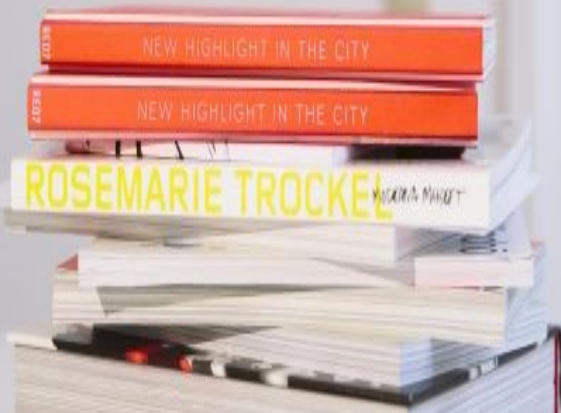
Congregation Beth Shalom wants to wish all of our college students a successful year!

Whether this is their first year away from home or they are ready to graduate, CBS wants our college students to know we are thinking of them throughout the year.

College Connection is open to all former and current members with students 18-23 years old.

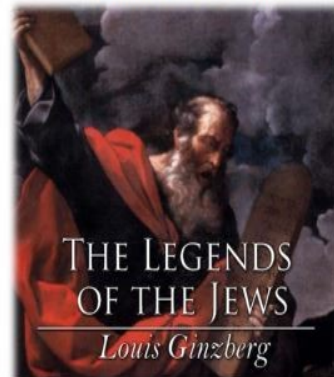
To participate, please complete the form below for each college-age student in your family and email it to CBSMembership@hotmail.com.

https://docs.google.com/document/d/1_38Jn-hIU3_bHJzFjuMSKPdpHQM_1D6gH-UqE8d44vo/edit



Congregation Beth Shalom
of Brandon

ADULT EDUCATION AT CBS!
ONLINE VIA ZOOM ~ TUESDAYS @ 7:30 PM
Beginning Nov. 10th



The four volume set is composed of the following:

Volume I: From the Creation to Jacob
Volume II: From Joseph to the Exodus
Volume III: From the Exodus to the Death of Moses
Volume IV: From Joshua to Esther

The Legends of the Jews by Louis Ginsberg is a chronological compilation of aggadah (stories, parables, anecdotes) from hundreds of biblical legends in Mishnah, Talmud and Midrash.

We will be discussing these various aggadot throughout the four volumes so be ready to be challenged like never before!

Join Zoom Meeting

[https://us02web.zoom.us/j/88544306465?](https://us02web.zoom.us/j/88544306465?pwd=aW1yUFNUaTBvYzkyMEYvL2lrWmVLQT09)
[pwd=aW1yUFNUaTBvYzkyMEYvL2lrWmVLQT09](https://us02web.zoom.us/j/88544306465?pwd=aW1yUFNUaTBvYzkyMEYvL2lrWmVLQT09)
Meeting ID: 885 4430 6465 Passcode: 656557

LIFELONG LEARNING — Janice Perelman

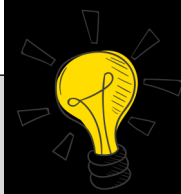
Life Long Learning Continues ...



Although modified in scope, just like everything has been during this pandemic, Life Long Learning continues to try to establish learning opportunities for you. Reb Tuviah has presented a series of interesting presentations during the month of November in his own inimitable style.

No matter what is happening in the world, we all still need to eat. With that in mind, how's about starting a "CBS Foods Network" cooking class? Nancy Schreiber has volunteered to teach us how to bake challah to start us off. What recipe would you like to teach, one which could take not more than 1 hour, on zoom? You can e-mail me at chinadollip@verizon.net, or call me at (813) 748-8042, and we will discuss details. I will be learning

The Lifelong Learning Committee currently consists of the following members: Sheryl Finke, Steven Feldman, Gerald Pliner, Caren Magdovitz, Anita Clifford, and Christine Stockelman. Please feel free to add your name to this list. To join, please write to chinadollip@verizon.net or call (813) 748-8042.



how to operate zoom right along with you. We could start classes in January, and you can have input into selecting your date.

I look forward to hearing from you and to learning how to prepare some fabulous foods.

Janice Perelman, chairperson

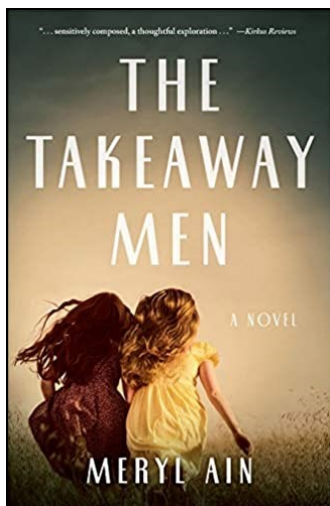
PAGE TURNERS

Monday, Jan. 18, at 7 p.m., Page Turners will meet to discuss "The Takeaway Men" by Meryl Ain.

With the cloud of the Holocaust still looming over them, twin sisters Bronka and Johanna Lubinski and their parents arrive in the U.S. from a Displaced Persons Camp. In the years after World War II, they experience the difficulties of adjusting to American culture as well as the burgeoning fear of the Cold War. Years later, the discovery of a former Nazi hiding in their community brings the Holocaust out of the shadows. As the girls get older, they start to wonder about their parents' pasts, and they begin to demand answers. But it soon becomes clear that those memories will be more difficult and painful to uncover than they could have anticipated.

Poignant and haunting, "The Takeaway Men" explores the impact of immigration, identity, prejudice, secrets, and lies on parents and children in mid-twentieth-century America.

Watch the eBlast for a Zoom link for this event.



Women's Health & Wellness Individualized OB/Gyn Care



- Better Care from Adolescent Age to Geriatric Age
- Fertility to In Office Birth Control Procedures
- Personalized One-on-One Care
- Outpatient Procedures with Little or No Downtime
- Weight-Loss Program
- 3-D & 4-D Ultrasound

Stephen Zweibach, M.D.
Natasha Champion, M.D.
Mariel Rotundo-Patino, D.O.
Heidi DiSalvo, D.O.

2 Locations to Serve You
815 S. Parsons Avenue, Brandon
13148 Vail Ridge Drive, Riverview
813-571-2777 **whnw.net**

Se habla español



EDUCATION

Chanukah Events

▪ Friday, Dec. 11, at 7:30 p.m., join us for Channukah and Shabbat on the Back Lawn.

Please bring your menorah and three candles. Please plan to arrive early so we have time to set up our menorahs.

▪ Sunday, Dec. 13, from 10 a.m. to noon, our religious school will host a Channukah celebration for students.



We are so excited to begin another school year at Congregation Beth Shalom and we hope the children are just as excited! Our religious school will meet on Sundays at 10 a.m.

For now, and in the interest of everyone's safety, we will be meeting virtually via Zoom. Let's get ready for a great year at CBS!

If you are interested in enrolling your child in our religious school program, please contact Reb Tuviah directly at rebtuviah@gmail.com.

Due to COVID-19, please check the eblast for the most current information and details.

CBS Adult Education

Are You Smarter Than a Hebrew Schooler Level 1, 2, and 3?

This eight-week course is only \$18!

We will be meeting in person and at the congregation. Day and times will be announced after CBS reopens our doors.

Sign up by contacting Jenny, our CBS administrator. You can reach the temple office at 813-681-6547 or email cbs-admin@hotmail.com.

Bar/Bat Mitzvah Information

TUTORING: Bar/Bat Mitzvah tutoring is available. Contact Reb Tuviah to make an appointment and set a date. Michael Lubin is available for all your tutoring requests.



ANNOUNCEMENTS: If you would like to have information on your child's upcoming Bar or Bat Mitzvah listed in *The Kibbitzer*, please submit an article and picture (digital if possible) to theKibbitzer@hotmail.com by the second Friday of the month prior to your service.

CONFIRMATION

Calling all teens who want to continue to explore their growth and knowledge of Judaism, Jewish thought, and Jewish life!

Plans are now under way with Reb Tuviah to meet with our confirmation students, youth group members, and any interested teens ages 13-16 effective with the 2020-21 school year. We are considering meeting monthly, but no specific dates have been identified.



Topics being considered for these meetings could include:

- how to address modern issues within the text of Jewish law,
- ethical practices,
- the place of Israel in our lives,
- anti-Semitism and racism, and
- other religions.

However, we welcome any suggestions from our youth or their parents.

With your help, the curriculum can be exciting and interesting –and we hope to provide further conversations within families about Judaism and Jewish life.

If you have any suggestions for this program, please reach out to Reb Tuviah at rebtuviah@gmail.com or the temple office.

SOCIAL ACTION — Judith Pliner

At our first Shabbark Shalom Service held in October, the social action committee collected donations of food, treats, and toys for pets. The drive was very successful, and the items collected will be donated to an animal shelter. Thanks to all who donated items for this worthy cause.

The fundraising, ritual, and social action committees are sponsoring a Chanukah Bazaar on Sunday, Dec. 6, under a canopy on the temple grounds from 10 a.m. to noon. We will be collecting gift cards, and new or slightly used item that we can gift to children from families suffering under financial distress. Please come out and show your support. More details about this event can be found on page 5.

Doogie Entertainment

DJ and Party Services

Weddings
Bar/Bat Mitzvahs
Children's parties
80's & 90's video parties
Office Parties
PA system rental/set-up



Phone: 813-400-3607

www.DoogieEntertainment.com

E-mail: Doogie@DoogieEntertainment.com

Pleased to offer a 10% discount on services to members of Congregation Beth Shalom

Ladies Night In

Enjoy a virtual night out with the ladies of CBS!

2nd Tuesday of each month

6:30pm

Join us for a Zoom get-together
to connect with friends near & far.

December 8

Sandee Pelk // sandeepelk@verizon.net // 813.390.5056

The ESCAPE ROOMS that COME TO YOU!

ADULTS & KIDS GAMES

HIGH TECH DEVICES

IN-GAME HOST

SPECIAL EFFECTS



The Ultimate Team Building Experience

All we need is 300sf of space...any room to set up

Offices - Home - Schools - Hotels - Clubhouse

PuzzleRoomEscape.com

Call 754-252-3477



Your 100% Satisfaction is Absolutely
Guaranteed !

Clarke Automotive Systems

*If you have a problem with your car, let us give you our honest, expert
& straightforward advice so the job is done right—the first time !*

Bob Clarke
(813) 685-2939

131 Central Ave
Brandon, FL 33510

THANK YOU TO OUR HIGH HOLY DAYS BRIDGE BUILDERS 5781

BONIM BRIDGE ☆ \$3,600—\$7,500

- (1) Anonymous
- (2) Anonymous
- (3) Anonymous

MITZVAH BRIDGE ☆ \$360 - \$1,799

Mitchell & Suzie Baylis
Steve Billor
Anita Clifford
Caren Magdovitz
Stephen & Anna Feldman
Carol Roberts
Steve & Sheila Slavkin
Bruce & Janice Sperry
Allan & Denise Weber
Alan Weiss & Toby Koch
Michael & Gail Verlin

CHAI BRIDGE ☆ \$180 - 359

Jon & Isabell Ellis
Randy & Danita Freedman
David & Carol Anne Friedman
Michael & Lea Garbett
Margaret Khan
Brian & Arlene Salter
Nathan & Fruma Tanzer

CHAVERIM BRIDGE ☆ \$36 - 179

Joan Frankel
Meral Ginsberg
Barbara Glaser
Michael & Cheryl Lubin
Maria Miranda
Mags Oldman
Janice Perelman
Joe & Carol Plesur
Sue Reckner
Arleen Sanders
Howard & Sandy Saviet

The High Holy Day Appeal for 5781 is open through the end of January 2021. To make a contribution, please contact the office. This does not include donations made through the Book of Remembrance or Adopt-a-Book Campaigns, nor does it include non-members. If there are any errors or omissions to this listing, please notify the office as well.

ROARING 20s GALA SPONSORS

When it's time to pick a vendor or hire a professional for services, keep in mind these generous businesses that support CBS. Thank you to the following businesses and friends for their participation in our Roaring 20s Gala.

SPONSORS

Segal Funeral Home
Colorado Health & Youth Dermatology
Hillsboro Memorial Funeral Home
St. Petersburg Opera Company
Stephen & Anna Feldman
Christopher Waite, DMD (Brandon Dental)
Zomesa
HUB
Keith Balot - Kids 'R' Kids
Mark & Sheryl Finke
Errol & Sheila Fishman
Diane & Peter Jacobson
Anonymous
Robert Clarke Industries
Allan & Denise Weber
Dave & Carol Anne Friedman
Gerry & Judith Pliner
Brandon Plastic Surgery
Advanced Oral Surgery of Tampa
Toby Koch & Allan Weiss
Dr. Stephen Zweibach -
Women's Health & Wellness
Gulfside Pool & Spa Inc.
Reed & Reed
Isabel & Jonathan Ellis
Danita & Randy Freedman
Jan & Bruce Sperry
Dr. Shawn & Sam Wallace
Melissa Golden
Meral Ginsberg
Joan Frankel
Mitch & Suzie Baylis
Steve & Sheila Slavkin
Dr. Jeremy Rogers - Florida ENT & Allergy
Gail & Michael Verlin

SPECIAL THANKS TO

David Morris, Entertainer
Brandon Elks Lodge
Blake Kennedy, Auctioneer
Mitch & Suzie Baylis and
our FUNdraising Committee

DONATIONS

Congregation Beth Shalom accepts donations for many purposes, with a variety of opportunities for donors to support the good works of the Temple. You may contact the office either by phone or email to make a contribution, or head to our website to make a secure online payment through a PayPal account or by using a credit card.

Funds:

- **General Fund** (unrestricted): An unrestricted gift to the General Fund allows the temple to use those funds wherever they may be needed most. This fund incorporates contributions received from our High Holy Day Appeal, Yahrzeit donations, Bricklets, Adopt-A-Book, Tree of Life (unless otherwise indicated) and other non-restricted gifts.
- **Building Fund:** A fund to ensure the continuing physical growth of our spiritual home. Intended for capital improvements and major building repairs.
- **Endowment Fund:** Gifts to this fund are placed in an investment account and temporarily restricted or can be defined/restricted by the donor. This fund ensures the future of our temple.
- **Religious School Scholarship Fund:** These funds will be made available to Religious School students who are in need of tuition assistance, as determined confidentially by the Treasurer.
- **Rabbi's Discretionary Fund:** a fund for assistance to families in need, scholarship assistance, interfaith council, Holocaust museum and other endeavors at the Rabbi's discretion.
- **Youth Group Fund:** a fund that supports the ongoing engagement of post b'nai mitzvah youth, providing meaningful and fun experiences for our teens, and keeping them connected to their Jewish community.

If you wish to designate a gift to a particular purpose, for example, Food Bank, Choir, Oneg, Social Action, etc., you may do so by noting as such on your payment method or with an accompanying note; otherwise, your gift will be used where it is needed most.

Opportunities:

- **Adopt-A-Book:** A dedication label will be placed in one of our prayer books, to commemorate a simcha or in honor or memory of a loved one for just \$54.
- **Bricklets:** For as little as \$9 you can send a Bricklet Card instead of buying a card for birthdays, condolences, etc. A Bricklet Card in your name will be sent to the person you wish stating that a donation has been made in his or her name to Beth Shalom to honor the occasion.
- **Tree of Life:** The Tree of Life is on the back wall of our Sanctuary. An engraved leaf or stone can commemorate many simchas, b'nai mitzvah, wedding, birth, graduations, etc. Leaves are \$180, and stones are \$1800.
- **Yahrzeit Plaque:** To honor the death of a loved one, you may purchase a plaque that will be cared for in perpetuity for \$350. The name of the deceased along with their date of death is included on the plaque.

*Unless otherwise noted by you, your gift will be acknowledged in The Kibbitzer the month following its receipt.
If your donation is incorrectly listed or omitted, please notify the temple office immediately.*

Donations listed below were received between October 16 and November 15.

GENERAL FUND

In Loving Memory of Harriet J. Lawrence
Irving "Gerry" Lawrence

In Honor of Holden & Mansa, pets of Amara and Rowen
Anna & Stephen Feldman

In Loving Memory of Annette Feldman
Stephen & Anna Feldman

In Loving Memory of Florence Finkel
Stephen & Anna Feldman

In Honor of Lea Garbett, Woman of Distinction
Stephen & Anna Feldman

DONATION

Neal & Janet Kavesh
Steve Billor





Anniversaries

12/21 Lynn & Larry Kaler
12/31 Danita & Randy Freedman



Yahrzeits

12/1	Douglas	Miller	Brother	of	Eric	Miller
12/1	Geoffrey	Miller	Brother	of	Eric	Miller
12/1	Estella "Sandy"	Kurtz	Mother	of	Pam	Provenzano
12/3	Al	Smith	Father	of	Caren	Magdovitz
12/4	Irving	Balot	Father	of	Keith	Balot
12/5	Joan	Sherer	Mother	of	Carol	Roberts
12/5	Joel	Zazulia	Brother	of	Iylene	Miller
12/5	Leonard	Edelson	Father	of	Joel	Edelson
12/6	Diane E.	Slavkin	Mother	of	Steve	Slavkin
12/6	Sophia	Brenner	Wife	of	Phil	Brenner
12/8	Harold	Landfish	Father	of	Nancy	Landfish
12/8	Lisa	Alpert	Cousin	of	Carol	Wagner
12/9	Berne	Lubonne	Father	of	Carol	Plesur
12/10	Elaine	Freedman	Mother	of	Randy	Freedman
12/11	Jenny	Siegel	Grandmother	of	Eric	Miller
12/11	Jim	Stillman	Father	of	Amy	Weinstein
12/12	Kevin	Frye	Husband	of	Christina	Frye
12/13	Seymour	Ponemon	Father	of	Arthur	Ponemon
12/13	Ron	Miller	Uncle	of	Russell	Berman
12/15	Abraham	Kaplan	Father	of	Elisa	Criden
12/16	Robert Stanley	Greenfield	Father	of	Andrew	Greenfield
12/16	Rita	Weiss	Mother	of	Alan	Weiss
12/19	Miriam	Vogel	Grandmother	of	Bonnie	Jacob
12/21	Francis	Honaker	Aunt	of	Stephen	Feldman
12/22	Gloria	Bolnick	Mother	of	Jay	Bolnick
12/23	Rose	Frye	Relative	of	Christina	Frye
12/23	Ann	Edelson	Grandmother	of	Joel	Edelson
12/26	Florence	Plesur	Mother in Law	of	Carole	Plesur
12/26	Morton	Rabinowitz	Father	of	Mark	Rabinowitz
12/29	Schura	Dimant	Mother	of	Murray	Dimant
12/29	Pat	Bricklin	Cousin	of	Stephen	Feldman
12/29	Robert	Lange	Father	of	Sandee	Pelk
12/29	Lillian	Shames	Aunt	of	Sheila	Slavkin
12/31	Craig Morris	Neuman	Husband	of	Collette	Neuman



Birthdays

12/3 Ben Santucci
12/5 Joshua Freedman
12/7 Rachel Duncan
12/10 Steven Hindin
12/11 Judith Pliner
12/14 Bonnie Jacob
12/15 Shane Zweibach
12/18 Mordecai Elazer
12/21 Matt Hebert
12/26 Denise Weber
12/29 Mark Finke
12/30 Peter Jacobson

Simchat Shabbat!

Come celebrate your birthday or anniversary with us! A special Shabbat service is held every month to honor all our joys for that month. For this month it will be:

Dec. 18

The dates listed for the Yahrzeits are adjusted yearly according to the Jewish Calendar and may not necessarily coincide with the common date of death. Names are read for Kaddish at the Shabbat before the actual date. If you would like to have the common date listed, please contact the temple office.

Want to advertise in *The Kibbitzer*?

Ad Size	Monthly Rate	10% Discounted (Annual only)
Bus. Card	\$20	\$216
1/4 page	\$40	\$432
1/2 page	\$50	\$540
Full page	\$75	\$810

Special rate for CBS Members — 10% off MONTHLY rate with 6-month commitment.

To reserve your place in the next issue, e-mail the temple office at cbs-admin@hotmail.com or call 813-681-6547.

Babysitters

Contact the temple office for a list of available babysitters. Contact information, qualifications and transportation details are available for each sitter. We will not publish information about our younger members online due to privacy concerns.



ATTENTION! We send *The Kibbitzer* out online. This change has been made to help decrease one of our expenses at Beth Shalom.

However, if you prefer receiving your *Kibbitzer* via the US Mail, please call the Temple at (813) 681-6547 or e-mail the Temple (cbs-admin@hotmail.com) to tell us you **do not** want to get your *Kibbitzer* online. Please help Beth Shalom cut its expenses and receive your *Kibbitzer* sooner.



Thank You.

Now when you shop at smile.amazon.com, your purchases will support **Congregation Beth Shalom Of Brandon Inc.**

[Change your charity](#)



Next, make it easy to return to smile.amazon.com.
Install the AmazonSmile shortcut in your browser.

Install now for Internet Explorer

Share your support: [f](#) [t](#)

Dismiss



Congregation Beth Shalom is now participating in Amazon Smile — it's an easy way for CBS members, family and friends to support the temple. Simply use the following link:

<http://smile.amazon.com/ch/59-3026396> and shop, shop, shop!

JOIN US

Become a CBS member at
<https://bethshalom-brandon.org/wp-content/uploads/sites/173/2020/06/Membership-Application-2020-2021-2.pdf>

Brandon Foot Care Center
Larry A Kaler, DPM
Foot and Ankle Specialist

BrandonFoot.com

Lumsden Executive Park
669-A W Lumsden Rd
Brandon, FL 33511

Phone: (813) 654-3354
Fax: (813) 653-9177



Congregation Beth Shalom
of Brandon

December 2020

Sun	Mon	Tue	Wed	Thu	Fri	Sat
		1 7 PM Board Mtg	2 Men's Club	3	4 Erev Shabbat Service 7:30 PM	5
6 10 AM Religious School	7	8 Ladies Night In	9	10 6:30 PM Fundraising Committee Meeting	11 7:30 PM Erev Shabbat Service HANUKKAH Kibbitzer Deadline	12
13 10 AM Religious School— Hanukkah Prog & report Cards	14	15	16	17	18 7:30 PM Simcha Shabbat Service	19
20 HCPS Winter Break	21 HCPS Winter Break	22 HCPS Winter Break	23 LLL 6:30 PM Ritual 6:30 PM HCPS Winter Break	24 HCPS Winter Break	25 7:30 PM Erev Shabbat Service HCPS Winter Break	26
27 HCPS Winter Break	28 HCPS Winter Break	29 HCPS Winter Break	30 HCPS Winter Break	31 New Years Eve HCPS Winter Break		

Inside Scoop

<i>Dinner With The Tribe</i>	<i>4</i>
<i>Membership</i>	<i>5</i>
<i>Library Corner</i>	<i>6</i>
<i>Life Long Learning</i>	<i>8</i>
<i>Page Turners</i>	<i>8</i>
<i>Religious School</i>	<i>9</i>
<i>Calendar</i>	<i>15</i>

**We Do Things Better
When We Do Them Together.**